

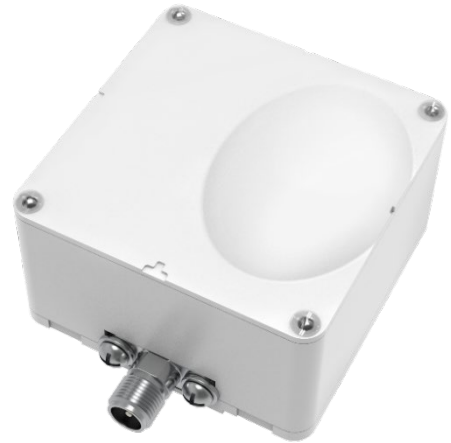
0051

- Circularly polarized antenna for triple band
- Verification antenna for AUT in test & measurement

Specification

Electrical		
Frequency range [GHz]	24.2~26.5 / 26.5~29.5 / 37.5~40.5	
Polarization	Circular	
Band width [GHz]	2.3 / 3.0 / 3.0	
Gain [dBic] (Typ.)	11.0 / 11.0 / 12.0	
HPBW [°] (Typ.)	Vertical	25 / 20 / 17
	Horizontal	33 / 29 / 33
Axial ratio [dB] (Max.)	3.0	
VSWR (Max.)	2.0:1	
Impedance [Ω]	50	

Model



Mechanical

Dimension (WxDxH) [mm]	42 x 42 x 27
Weight [g]	30
Connector type & No.	2.92 mm (f) x 1
Radome material & color	PC / White
Temperature [°C]	-40 ~ 70

Pattern

